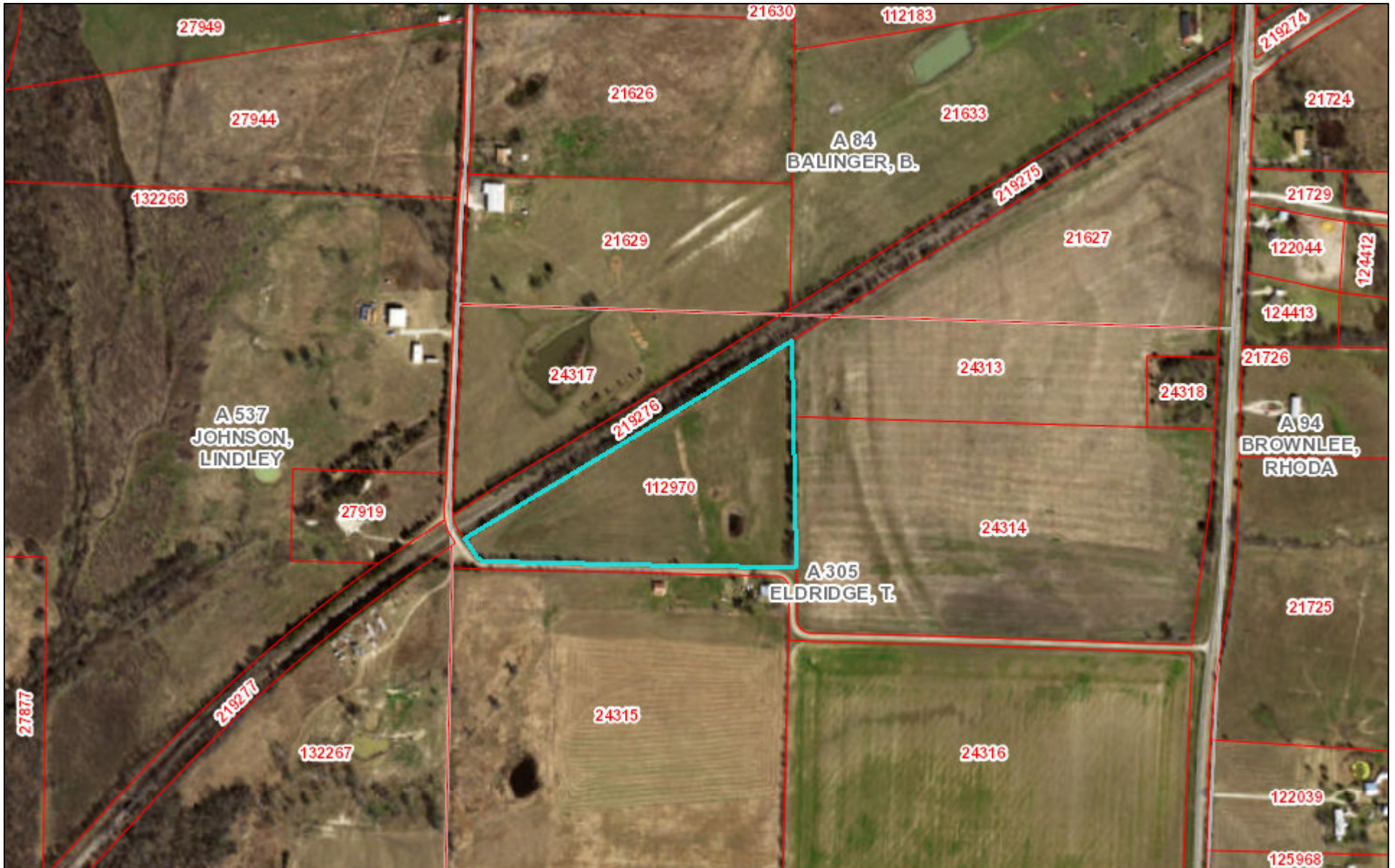


# CAD Aerial Black

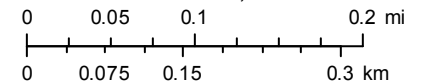


May 17, 2016

- Parcels
- Abstracts

Disclaimer: This product is for informational purposes only and has not been prepared for or be suitable for legal, engineering, or surveying purposes. It does not represent an on-the-ground survey and represents only the approximate relative location of boundaries

1:7,222



Source: Esri, DigitalGlobe, GeoEye, Earthstar Geographics, CNES/Airbus DS, USDA, USGS, AEX, Getmapping, Aerogrid, IGN, IGP, swisstopo, and

Hunt County Appraisal District & BIS Consulting - [www.bisconsultants.com](http://www.bisconsultants.com)

This product and relative contents are the property of the respective governmental entity and BIS Consultants. Use is restricted for official purposes.